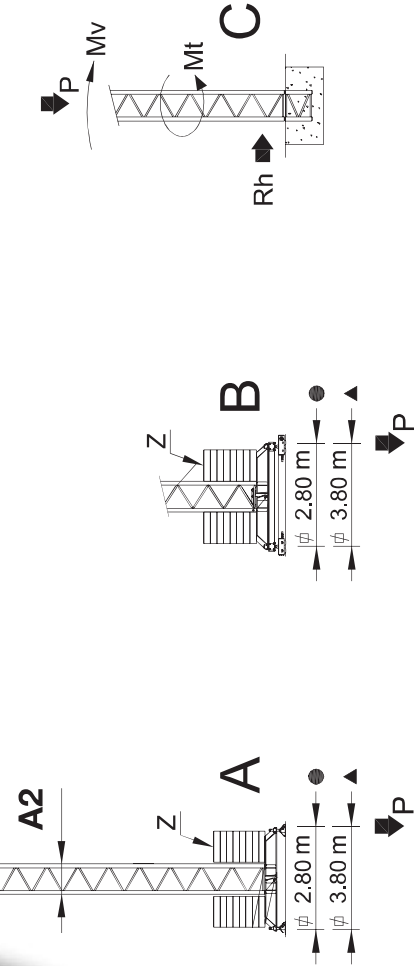


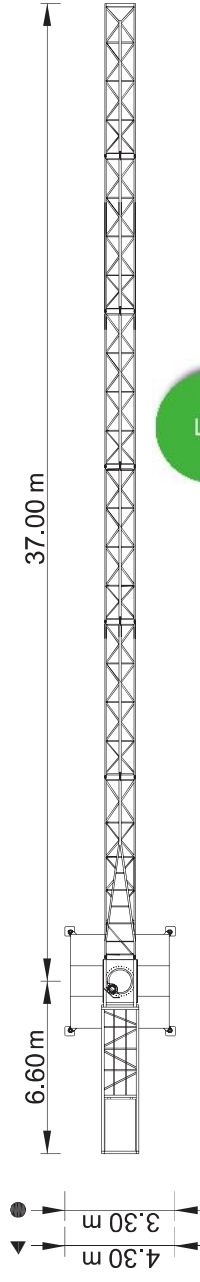
Cargas . Loads . Lasten . Charges . Cargas . Carichi . Yükleler . Грузоподъёмность

	kg/m	kg	m	kg	kg	kg	kg	kg	kg
9000 kg 6x1500 kg	L31+L32+L33+L34 L35+L36	2000	20 m	2000	2000	2000	2000	2000	2000
7500 kg 5x1500 kg	L31+L32+L33+L34+L36	20.6 m	20.6 m	2000	2000	2000	2000	2000	2000
6000 kg 4x1500 kg	L31+L32+L33+L36	19.7 m	19.7 m	2000	2000	2000	2000	2000	2000
4500 kg 3x1500 kg	L31+L32+L36	18 m	18 m	2000	2000	2000	2000	2000	2000
3000 kg 2x1500 kg	L31+L36	12 m	12 m	2000	2000	2000	2000	2000	2000



Reações . Reactions . Reaktionen . Réactions . Reacciones . Reazioni . Tepkimeter . РЕАКЦИИ

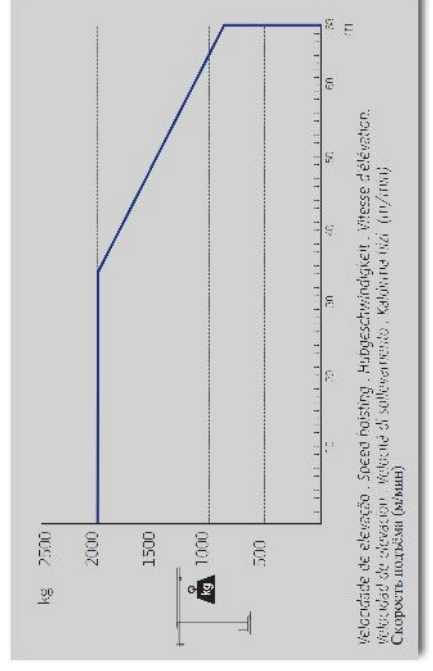
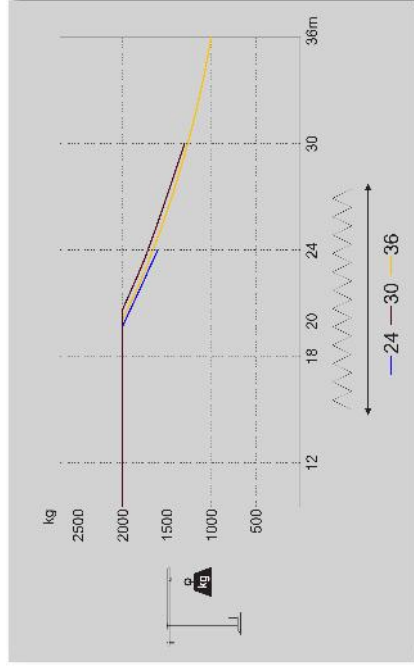
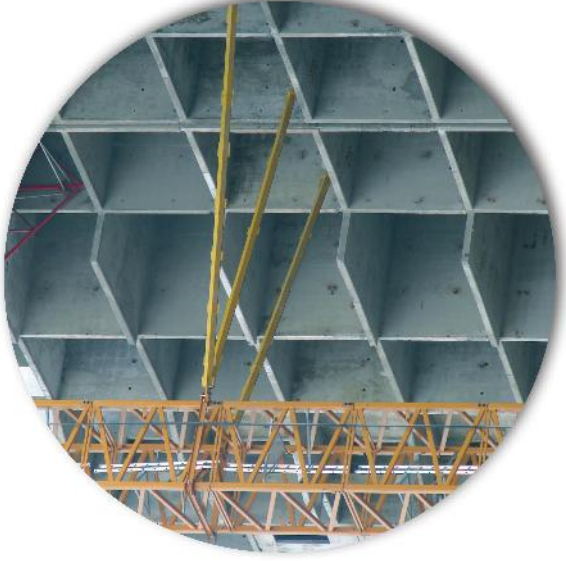
H m	A/B		C		Rh kN	Mt kNm		
	Z kN ▲	P kN ▲	Mv kNm	P kN				
18	400	250	312	219	566	172	17	26
21	400	250	313	221	569	178	20	26
24	400	250	314	222	571	184	23	26
27	400	250	315	224	574	190	25	26
30	400	300	316	238	577	196	28	26
33	480	350	338	264	580	202	31	26
36	600	400	417	286	711	208	34	26



Characteristics . Características . Eigenschaften
 Ozellikler . XAPAKTIPCTIKKI

	11 kW
	0 a 68 m/min
	0 a 1 rpm
	0 a 50 m/min
	15 m/min
	3 daN.m
	1,5 kW
	2x2 kW
	15 kVA
	400 V +- 5% (50/60 HZ)

*Opció . Option . Opzioni . Opzione . Seçenek . Опция



Velocidade de elevação - Speed of lifting - Húrgeschwindigkeit - Vitesse d'élévation -
 Velocidad de elevación - Velocità di sollevamento - Капитальная скорость (м/мин)
 Скорость подъёма (былина)



	A (mm)	B (mm)	C (mm)	kg	Code
L31	7470	800	1650	1560	506 36 11
L32	6075	760	1220	385	
L33	6055	760	1210	350	
L34	6040	760	1200	275	
L35	6030	760	1190	250	
L36	5900	760	1400	240	
CL1 R1Z	7380	1200	1530	2450	704 15 00
CP1	1160	320	2530	6x1500 9000	
TOTAL					14510

A2	11985	1180	1180	1950	506 12 00
A2	6075	1180	1180	1030	506 06 00
A2	3120	1180	1180	560	506 06 01
A2	3090	1385	1385	890	506 06 03
A2	1170	1160	1160	250	506 06 02

A2	4135	430	720	600	603 01 11
	2025	250	720	2x350 700	1300
TOTAL					

A2	5525	430	720	750	606 00 01
	2720	250	720	2x400 800	1550
TOTAL					

Elements . Parts . Teile . Eléments . Elementos . Elementos . Elements . Elementos . Parçalar . ЭЛЕМЕНТЫ