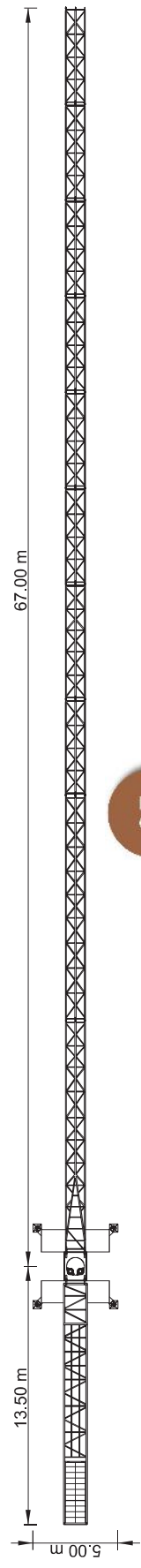
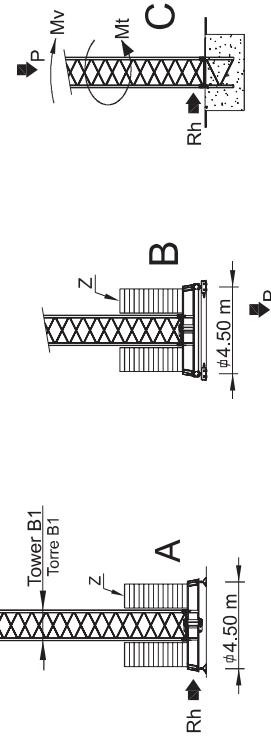


**Cargas. Lasten. Charges. Carichi. Yükle. Грузоподъёмность**

Cargas	Lasten	Charges	Carichi	Yükle	Грузоподъёмность	m		kg/m		kg		m											
						8000	4000	3000	M	K	18	23	28	33	38	40	45	50	55	60	65		
19000 Kg 9x2000 + 1x1000 Kg	65m	L68+L69+L73+L70+L56 L76+L65+L65+L66+L66				28.8	4000	4000	4000	4000	4000	3430	2920	2750	2380	2100	1860	1660	1500				
18000 Kg 8x2000 + 2x1000 Kg	60m	L68+L69+L73+L70+L56 L76+L65+L66+L66				14.6	6320	4750	3740	4000	4000	3030	2520	2350	1980	1700	1460	1260	1100				
18000 Kg 8x2000 + 2x1000 Kg	55m	L68+L69+L73+L70+L56 L76+L65+L66				16.8	7430	5620	4450	4000	4000	3640	3050	2850	2430	2100	1830	1600					
17000 Kg 8x2000 + 1x1000 Kg	50m	L68+L69+L73+L70+L56 L76+L65+L66				17.9	7960	6030	4790	4000	4000	3930	3300	3080	2640	2290	2000						
16000 Kg 8x2000 Kg	45m	L68+L69+L73+L70+L56 L76				18.5	8000	6200	4930	4000	4000	4000	3400	3180	2730	2400							
15000 Kg 7x2000 + 1x1000 Kg	40m	L68+L69+L73+L70+L56				19.2	8000	6450	5240	4000	4000	4220	3550	3330	2900								
13000 Kg 6x2000 + 1x1000 Kg	38m	L68+L69+L73+L70+L56 L65				19.3	8000	6480	5160	4000	4000	4000	3970	3800	3400								
11000 Kg 5x2000 + 1x1000 Kg	33m	L68+L73+L70+L56+L76				19.2	8000	6480	5170	4000	4000	4000	4000	4000	4000								
10000 Kg 5x2000 Kg	28m	L68+L73+L70+L56				18.5	8000	6220	4950	4000	4000	4000	4000	4000	4000								
						17.3	4000	5730	4600	4000	4000	4000	4000	4000	4000								

**Reações. Reactions. Reaktionen  
Réactions. Reacciones  
Reazioni. Tepkimeter  
PŁAKUŠY**

H m	AVB						C		
	Z kN	P kN	Mv kNm	P kN	Mv kNm	Rh kN	Rh kN	Mt kNm	
24	600	495	1490	392	30	135			
27	700	529	1534	400	34	135			
30	700	539	1582	408	38	135			
33	700	549	1634	415	42	135			
36	700	560	1691	423	45	135			
39	800	596	1750	431	49	135			
42	800	608	1815	439	53	135			
45	900	646	1884	449	57	135			
48	1000	685	1957	457	61	135			



	A (mm)	B (mm)	C (mm)	kg	Code
L68	11970	1900	2900	5050	531.60.15
L69	11960	1160	2260	1650	
L73	5230	1160	2260	750	
L70	6200	1160	1950	680	
L56	5200	1160	1930	590	
L76	5180	1160	1610	370	
L65	5110	1160	1610	330	
L66	5110	1160	1610	2x300 600	
RS9 RI9	2620	2180	2150	4860	
CL6	3860	1220	2280	1840	
CL4	11400	1500	500	4000	
CP3	1160	165	3140	1000	704.10.00
CP2	1160	330	3140	9x2000 18000	704.20.00
<b>TOTAL 39720</b>					
B1	12000	1620	1620	3450	508.12.00
B1	6130	1620	1620	1800	508.06.00
B1	3195	1620	1620	1070	508.06.01
B1	3195	1830	1830	1100	508.06.03
B1	1775	1600	1600	650	508.06.02
<b>TOTAL 3750</b>					
B1	6620	500	1040	1850	608.00.01
B1	3210	340	1040	2x950 1900	
<b>TOTAL 3750</b>					



Características . Characteristics . Eigenschaften . Características . Características . Características . Характеристики . XAPAKTIPHTIKH

	0 a 72 m/min 0 a 36 m/min	22 kW
	0 a 1 r.p.m.	3x5 daNm
	0 a 60 m/min	5.5 kW
	0-10 m/min	2x4 kW
	400 V +- 5% (50/60 Hz)	40 kVA

\*Opção . Option . Option . Opzione . Seçenek . Опция

